

**PYGL Antibody (C-Term)**  
**Purified Rabbit Polyclonal Antibody (Pab)**  
**Catalog # AP21847b**

**Specification**

---

**PYGL Antibody (C-Term) - Product Information**

Application	WB, IHC-P,E
Primary Accession	<a href="#">P06737</a>
Reactivity	Human, Mouse
Host	Rabbit
Clonality	polyclonal
Isotype	Rabbit IgG
Calculated MW	97149

**PYGL Antibody (C-Term) - Additional Information**

**Gene ID** 5836

**Other Names**

Glycogen phosphorylase, liver form, PYGL

**Target/Specificity**

This PYGL antibody is generated from a rabbit immunized with a KLH conjugated synthetic peptide between 809-843 amino acids from human PYGL.

**Dilution**

WB~~1:2000

IHC-P~~1:25

E~~Use at an assay dependent concentration.

**Format**

Purified polyclonal antibody supplied in PBS with 0.09% (W/V) sodium azide. This antibody is purified through a protein A column, followed by peptide affinity purification.

**Storage**

Maintain refrigerated at 2-8°C for up to 2 weeks. For long term storage store at -20°C in small aliquots to prevent freeze-thaw cycles.

**Precautions**

PYGL Antibody (C-Term) is for research use only and not for use in diagnostic or therapeutic procedures.

**PYGL Antibody (C-Term) - Protein Information**

**Name** PYGL ([HGNC:9725](#))

**Function** Allosteric enzyme that catalyzes the rate-limiting step in glycogen catabolism, the phosphorolytic cleavage of glycogen to produce glucose-1-phosphate, and plays a central role in

maintaining cellular and organismal glucose homeostasis.

#### **Cellular Location**

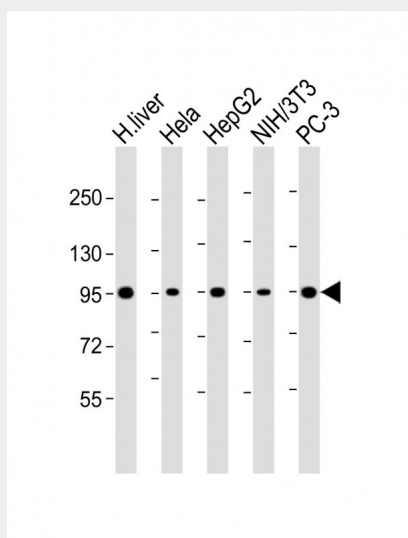
Cytoplasm, cytosol.

#### **PYGL Antibody (C-Term) - Protocols**

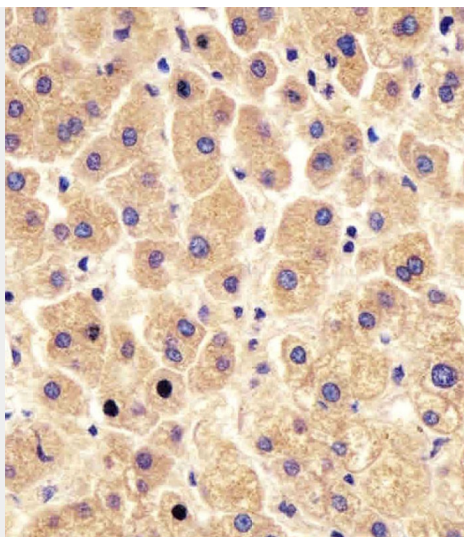
Provided below are standard protocols that you may find useful for product applications.

- [Western Blot](#)
- [Blocking Peptides](#)
- [Dot Blot](#)
- [Immunohistochemistry](#)
- [Immunofluorescence](#)
- [Immunoprecipitation](#)
- [Flow Cytometry](#)
- [Cell Culture](#)

#### **PYGL Antibody (C-Term) - Images**



All lanes : Anti-PYGL Antibody (C-Term) at 1:2000 dilution Lane 1: human liver lysate Lane 2: Hela whole cell lysate Lane 3: HepG2 whole cell lysate Lane 4: NIH/3T3 whole cell lysate Lane 5: PC-3 whole cell lysate Lysates/proteins at 20 µg per lane. Secondary Goat Anti-Rabbit IgG, (H+L), Peroxidase conjugated at 1/10000 dilution. Predicted band size : 97 kDa Blocking/Dilution buffer: 5% NFDM/TBST.



AP21847b staining PYGL in human liver tissue sections by Immunohistochemistry (IHC-P - paraformaldehyde-fixed, paraffin-embedded sections). Tissue was fixed with formaldehyde and blocked with 3% BSA for 0.5 hour at room temperature; antigen retrieval was by heat mediation with a citrate buffer (pH6). Samples were incubated with primary antibody (1/25) for 1 hour at 37°C. A undiluted biotinylated goat polyvalent antibody was used as the secondary antibody.

#### **PYGL Antibody (C-Term) - Background**

Phosphorylase is an important allosteric enzyme in carbohydrate metabolism. Enzymes from different sources differ in their regulatory mechanisms and in their natural substrates. However, all known phosphorylases share catalytic and structural properties.

#### **PYGL Antibody (C-Term) - References**

Newgard C.B., et al. Proc. Natl. Acad. Sci. U.S.A. 83:8132-8136(1986).  
Carty M.D., et al. Submitted (MAY-1998) to the EMBL/GenBank/DDBJ databases.  
Chang S., et al. Hum. Mol. Genet. 7:865-870(1998).  
Burwinkel B., et al. Am. J. Hum. Genet. 62:785-791(1998).  
Ota T., et al. Nat. Genet. 36:40-45(2004).